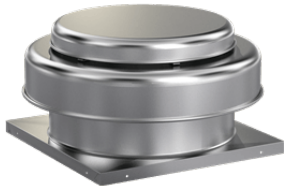




SKU
AE-10-420-A8X-QD

Job Name:
Mark:
Submitted By:
Date: 04/06/2025

Axial Roof Exhaust Fan, Product # AE-10-420-A8X-QD, 189-550 CFM

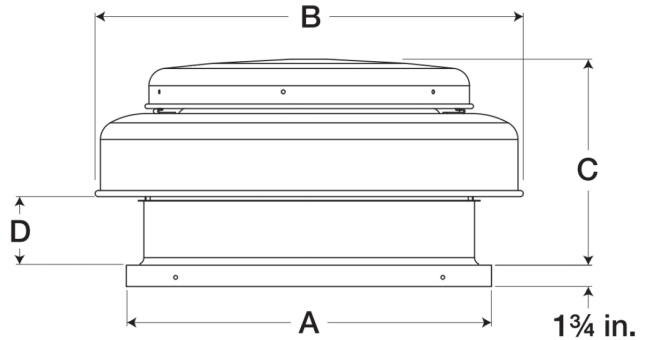


Model AE, direct drive axial exhaust fan is designed for economy and reliability in low pressure/low volume applications. Typical applications include general clean air ventilation.

- 19 x 19 inch base with prepunched mounting holes for easy attachment to roof curb
- 10 inch fabricated aluminum propeller designed for low sound levels
- 14.5 x 14.5 inch recommended roof opening

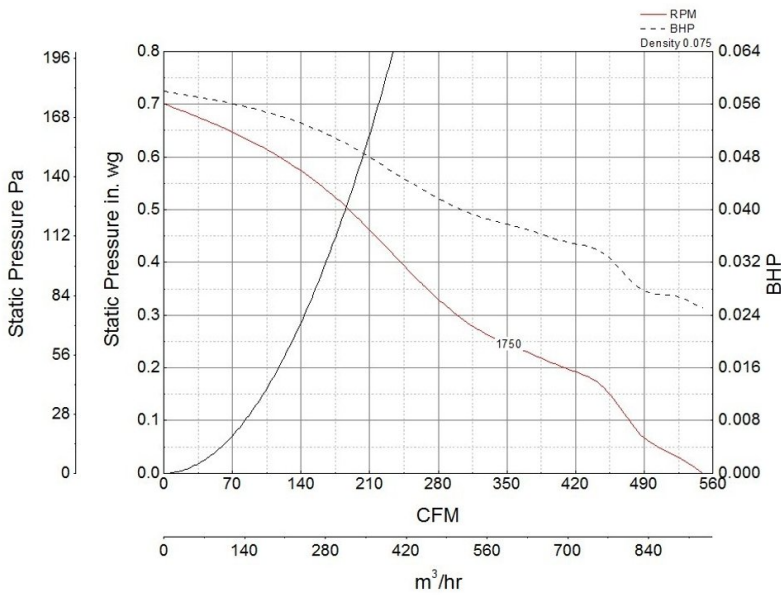
Certifications

AMCA Sound & Air
UL/cUL 705



A	B	C	D
19 in	24.625 in	15.5 in	5.5 in

Performance Characteristics



Construction Features

Housing Material	Spun Aluminum
Drive Type	Direct Drive
Impeller Type	Propeller
Impeller Material	Aluminum
Includes	Birdscreen
Certifications	AMCA Sound & Air UL/cUL 705
Speed Controllable	Yes
Required Accessory	Roof Curb

Motor Information

Motor Insulation	B
Motor Phase	1
Motor Type	NEMA
Service Factor	1
Voltage	115
HP	1/8
Hertz	60
Motor Enclosure	Totally Enclosed Air Over
RPM	1800
Thermal Protection	AutoOverload
Nominal Efficiency	60
NEMA Frame Size	48YZ

Air and Sound Performance

Motor HP	Max BHP	Max Fan RPM	Min Fan RPM	Ps (in. wg)	0	0.125	0.25	0.375	0.5
1/8	0.05	1750	0	CFM	550	465	347	255	189
				Sones	9.6	10.5	13.2	12	16.8



- Greenheck Fan Corporation certifies that the model shown herein is licensed to bear the AMCA Seal. The ratings shown are based on tests and procedures performed in accordance with AMCA Publication 211 and AMCA Publication 311 and comply with the requirements of the AMCA Certified Ratings Program.
- Performance certified is for installation type A: Free inlet, Free outlet.
- Power rating (BHP/kW) does not include transmission losses.
- Performance ratings include the effects of birdscreen.
- The sound ratings shown are loudness values in fan sones at 5 ft. (1.5 m) in a hemispherical free field calculated per AMCA Standard 301. Values shown are for installation type A: free inlet hemispherical sone levels.

California Residents

 **WARNING**

This product can expose you to chemicals including cadmium used in the processing of corrosion resistant metal and fasteners, which is known to the State of California to cause cancer and birth defects or other reproductive harm. For more information visit www.P65Warnings.ca.gov